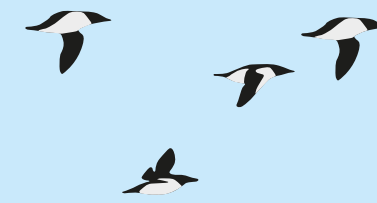
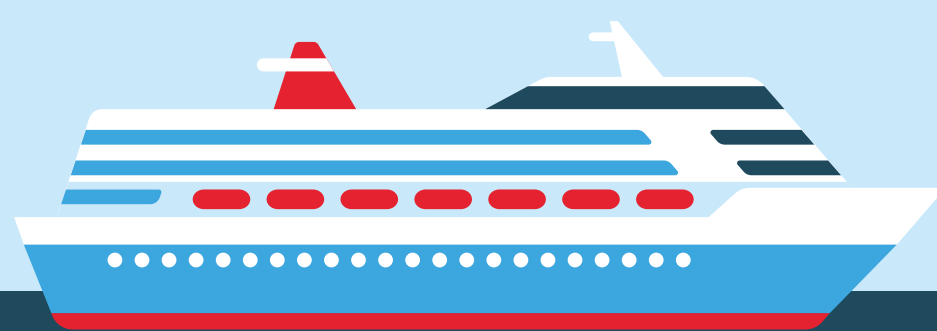


# Visiting Northern communities

We wish you a warm welcome to the North and kindly ask you to follow some important guidelines to ensure that your visit results in an enjoyable experience for everyone.



## Be a good guest

- Keep an open mind.
- Learn about the local culture.
- Engage the people you meet with respect.
- Be polite and friendly.
- Talk with and not about the people you meet.



## Leave no trace

- Do not litter.
- Waste handling facilities may be limited – consider bringing waste back with you.
- Participate in cleanups organized by your operator.
- Keep nature clean by using toilet facilities.



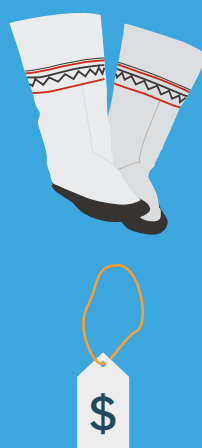
## Be a considerate photographer

- Do not glance or photograph through windows.
- Ask before you take photos of people – a hesitation means **no**.
- Never photograph children without their superiors' permission.
- Do not photograph religious or cultural ceremonies without permission.



## Support the community

- Buy local souvenirs and products.
- Ask your guide what is okay to buy locally– supplies may be limited.
- Do not bargain, not even in markets.



## Be mindful and aware



- Always respect privacy, private property and places of cultural or religious significance.
- Never enter a private house without an invitation.
- Do not walk on graves.
- Avoid blocking roads, entrances and exits.
- Be mindful of your behavior.